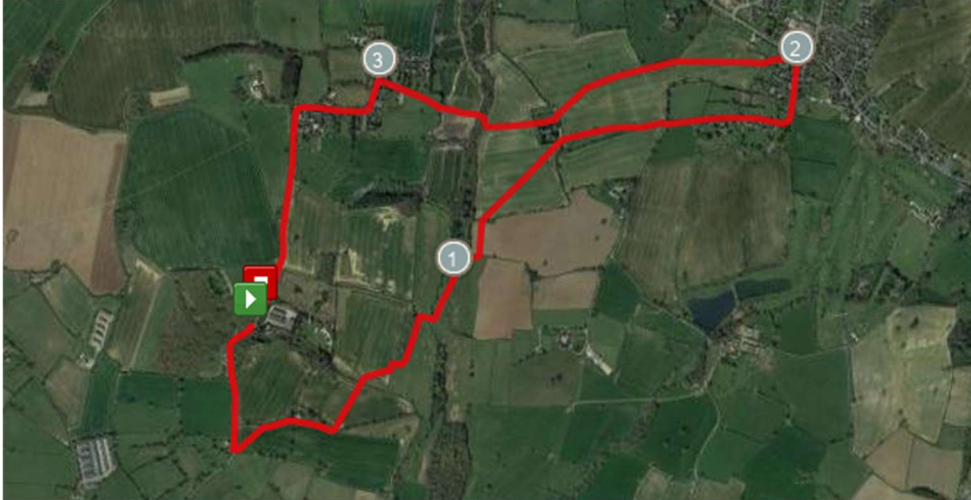


# Brailsford walk instructions

**Walk Notes:** 4 mile circular walk. Can be muddy when wet. There may be farm animals on the way. Part of the walk is on a road without a path, so care is needed. Dogs need to be on a lead.



**Start:** On the main road head out towards the village of Hollington (right out of Heritage Wood, left out of Lakeside Meadow). Be sure to take good care on the road as you proceed for approx. ¼ mile.

Go past the turning for Mossnip on the left and keep going till you see a metal gateway also on your left-hand side.



Go through the gate (often closed, please close behind you) and follow the footpath that is diagonal back up through the field.



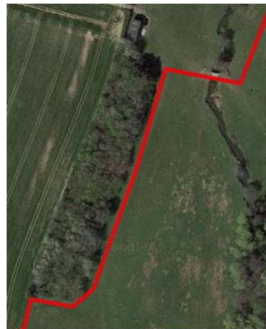
You will be picking up the main path to Mossnip, proceed past the house then follow the hedgerow that is on your left.

You will be turning left into the next field just after the end of the hedgerow and follow the path through the centre of the field across to where you can see a breakthrough in the hedge. Once you are through this into the next field you will see Lakeside Meadow CL visible on your left.



In this field you will be cutting across right where you need to aim to the edge of the tree line.

Climb over the stile into the next field.

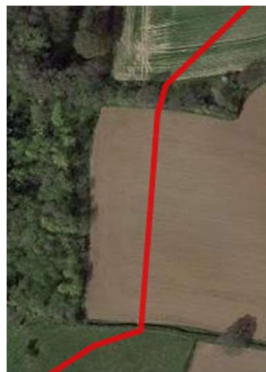


Now head to the trees that you see on your left and walk alongside the length of the trees keeping them to your left-hand side as you proceed down the field. At the end of the treeline, you will see a metal workshop on your left.

You now need to cross over Brailsford brook. To do this, at the edge of the tree line turn right and cross over the concrete crossing through the gate and into the next field.

In this field you need to bare left then head to the right of the treeline you can see, where there is a stile in the hedge.

In this next field you need to proceed straight across in parallel to the trees that are on the left.



Cross through the hedgerow and then head diagonally up towards Brailsford church.

Passing by Brailsford church with the car park to your left take the road track and head towards Brailsford village.

Proceed straight onto Church Lane and keep going, as the road makes a left bend you will shortly pass the medical centre on your left. Carry on walking on Church Lane till you reach the A52.

**At this point you can break off and explore Brailsford if you wish. Halfway point!**

To continue the walk at the end of the road on the left you will see a gap in the hedge where there is a stile. Head into what appears to be someone's garden.



Proceed on and then enter through the metal gate and then go into the paddock. On your left you will now see a wooden building.



Head to the right-hand side of this building where in the corner you will see the entrance to the next field that you need to take. Head across the field to the corner of the hedge line





Keep following the pathway all the way till you reach Brailsford church. Cross over the car park and enter the church yard keep the church building to your left. Go straight through the yard and out into the field beyond. Head straight to the tree line ahead then as the path winds cross over Brailsford brook and proceed past the fishing lakes on your right.



Once past the lakes you will go through the stile into the next field and then head towards the fence that is on the right-hand side of the field.



Go through the gate in the fence and follow the footpath through to the main road in the village.



Once on the main road turn left and this will take you all the way back to your starting point.